

IMC 178-578

# Automatic Closing Machines for round cans

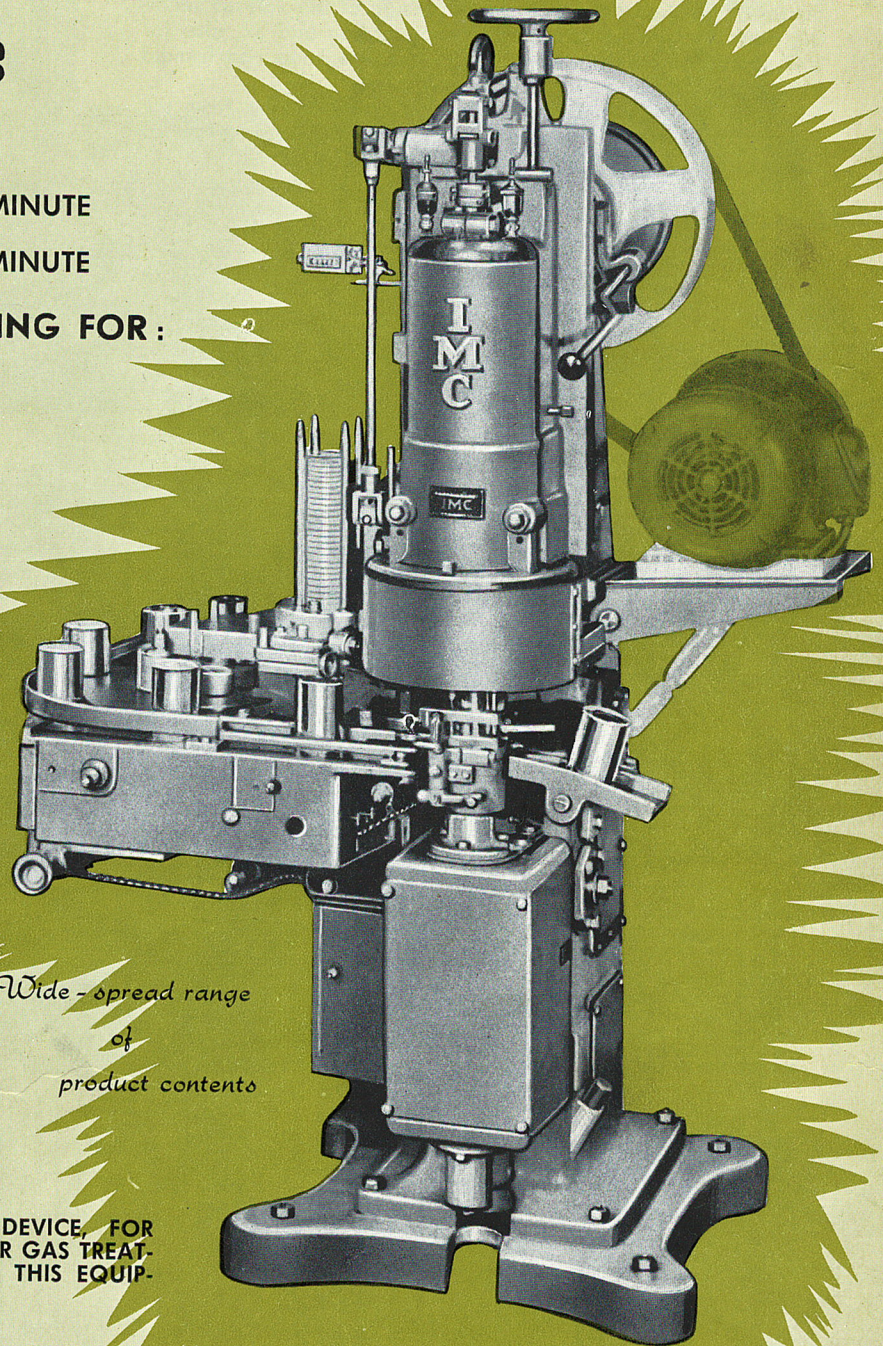
MODEL IMC 178 UP TO 65 CANS PER MINUTE

MODEL IMC 578 UP TO 80 CANS PER MINUTE

## THE FEATURES YOU ARE LOOKING FOR:

- AUTOMATIC CAN AND COVER FEED.
- CANS REMAIN STATIONARY DURING CLOSING.
- "NO CAN - NO COVER" DEVICE INCLUDED.
- OVERLOAD STOPS THE MACHINE.
- SMOOTH RUNNING BY OIL PRESS LUBRICATION.
- FAULTLESS ELASTIC SECOND OPERATION SEAMING.
- FOUR SEAMING ROLLS MOUNTED ON SPECIAL BEARINGS.
- PACKING OF THE CONTENTS OF THE CAN (ON APPLICATION).
- AUTOMATIC CODING OF THE COVERS (ON APPLICATION).
- ALL THE PARTS WHICH MAY COME IN CONTACT WITH THE PRODUCT ARE MADE OF STAINLESS STEEL OR SPECIAL BRONZE OR STEEL, OR CHROMIUM-PLATED, DIMINISHING COST OF MAINTENANCE.
- AUTOMATIC COVER FEED WITH ROTATING KNIVES IS PROVIDED ON MODEL IMC 578.
- DISC FEED FOR VERSATILITY OF INSTALLATION IN YOUR PRODUCTION LINE; AN EXTRA FEED DISC MAY PROVIDE FOR EVEN LARGER INSTALLATION POSSIBILITIES.
- DIRECT FEED FROM OUR CHOICE OF FILLERS WHEN HOOKED UP WITH ONE OF THEM.

*Wide - spread range  
of  
product contents*



STEAMING OR GASSING DEVICE, FOR PACKS REQUIRING STEAM OR GAS TREATMENT, ARE APPLICABLE ON THIS EQUIPMENT.



Key to  
food equipment



**S. A. INTERNATIONAL MACHINERY CORPORATION**

BREEDSTRAAT 3 • SINT-NIKLAAS-WAAS • BELGIUM

*Representatives and licensees for Food Machinery and Chemical Corporation and other leading manufacturers in the U.S.A. for canning and food processing equipment.*

## OPERATION

The can feed of these machines is suitable for receiving filled cans either directly from a filler or through a conveyor.

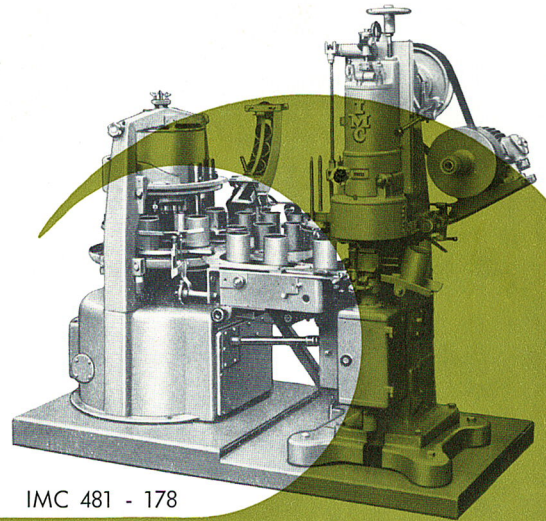
Entrance of filled cans is automatized by means of the mechanical timing devices mounted ahead of the feeding table; the latter conveys one can at a time to the spider, where the actual closing is performed.

Lids may be put stackwise into the magazine holder of the machine.

On its way to the spider each can is automatically ordering its own lid out of the stacker. The lid is then carried (through the coding device) into the spider above the can.

Smooth operation and experienced design of the various seaming parts provide for proper centering of can and lid, also for sufficient pressure between both, while the seam, performed in two full operations, is automatically made.

Finally a positive discharge device clears the spindle from the closed can, which is evacuated through a chute, the slope of which is adjustable.



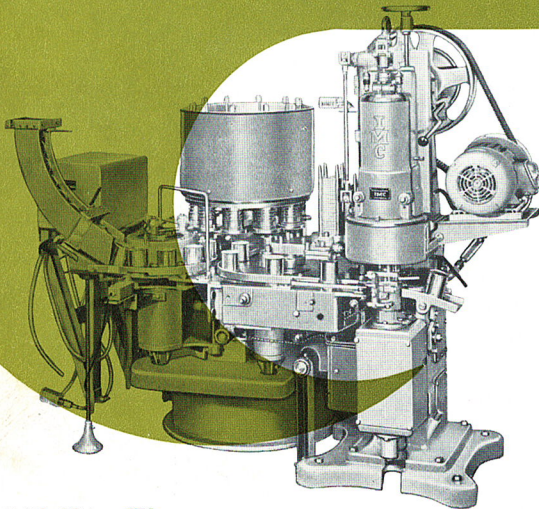
IMC 481 - 178

## HOOK-UP TO FILLERS

In order to obtain maximum output of accurately filled and seamed cans, a large number of our clients request that our closing machine IMC 178 or 578 be hooked up to one of our fillers.

Liquid spilling is reduced to an absolute minimum.

Several "one-man filling and closing stations" are now operating throughout Europe in the oil, milk, beer and fruit juice packing and canning industries.



IMC 294 - 578

## SPECIFICATIONS

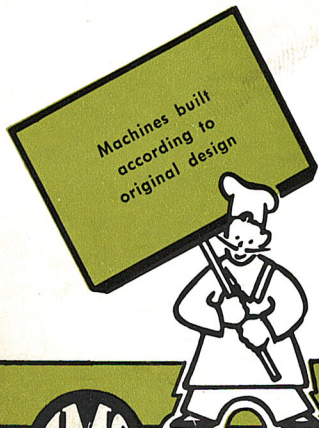
	IMC 178	IMC 578
Output, cans per minute :	up to 65	up to 80
Can range		
inside Ø, minimum :	52,5 mm (2" 1/16) (201)	idem
minimum on request :	45 mm (1" 3/4) (112)	33 mm (1" 5/16) (105)
maximum :	108 mm (4" 1/4) (404)	idem
maximum on request :	110 mm (4" 5/16) (405)	—
curled lid, overall Ø, maximum :	120 mm (4" 3/4) (412)	—
overall height, minimum :	25 mm (1" ) (100)	35 mm (1" 3/8 ) (106)
maximum :	155 mm (6" 1/8 ) (602)	idem
max. on request :	167 mm (6" 9/16) (609)	idem
max. on request :	225 mm (8" 7/8 ) (814)	—
Motor :	3 HP - 1500 RPM	idem
Net weight approximative :	990 kg (2180 lbs)	1100 kg (2420 lbs)
Gross weight approximative :	1185 kg (2610 lbs)	1400 kg (3080 lbs)
Shipping volume approximative :	3,7 m <sup>3</sup> (130 cu. ft.)	4,3 m <sup>3</sup> (150 cu. ft.)
Motor and electrical wiring equipment on application.		

(For can ranges exceeding the above specifications, see our models IMC 478 and IMC 380).

## OTHER CLOSING UNITS

Automatic high speed closing machine CCC 450 - IMC 650. • Automatic high speed closing machine, for cylindrical cans IMC 550. • Automatic closing machine for round cans (stationary can) IMC 250 and IMC 252. • Automatic closing machine for big round cans IMC 478. • Semi-automatic vacuum closing machine for square, irregular and round cans IMC 931. • Semi-automatic vacuum closing machine for large sizes, irregular, pearshaped and round cans IMC 933. • Automatic Cameron vacuum closing machine IMC 226 and IMC 216. • Semi-automatic closing machine for irregular and round cans IMC 131/2 - 531. • Semi-automatic closing machine for round cans IMC 443. • Automatic Cameron closing machine for square cans IMC 224 and IMC 524. • Automatic closing machine for unround and round flat cans IMC 126. • Automatic closing machine for unround preclined flat cans IMC 126 H.

Write or call  
your nearest  
IMC representative



**S. A. INTERNATIONAL MACHINERY CORPORATION**

Copies of this edition are available in German or French.  
Ce catalogue peut être obtenu en allemand ou en français.  
Dieser Katalog ist in französischer oder deutscher Sprache zu erhalten.

Illustrations and data do not necessarily conform to finished equipment due to changes, adaptation and improvements which may be introduced.