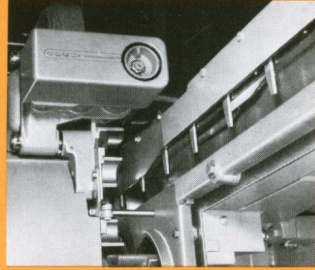


Model 60L ...for fast, accurately timed operation

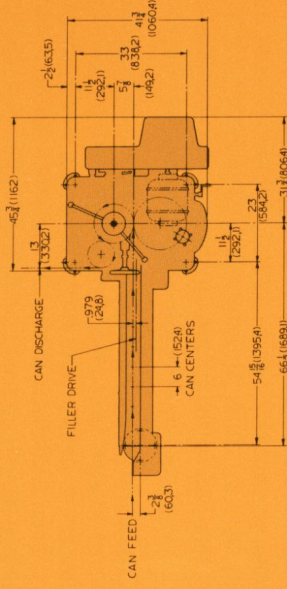


Straight line can feed minimizes spill. Compatible with most fillers of comparable speed.



Six-station rotary seaming turret. Cans spinning during the seaming operation to permit close center spacing.

Wide range of accessories—Attachments and accessories for the can closing machine include a filler drive, in-motion filler timer, connecting parts for specific fillers, discharge conveyor, steam vacuum, undercover gassing attachment, heavy duty cover marker, and others.

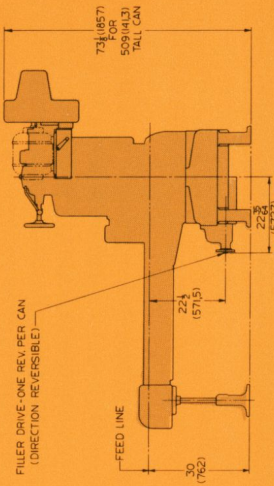
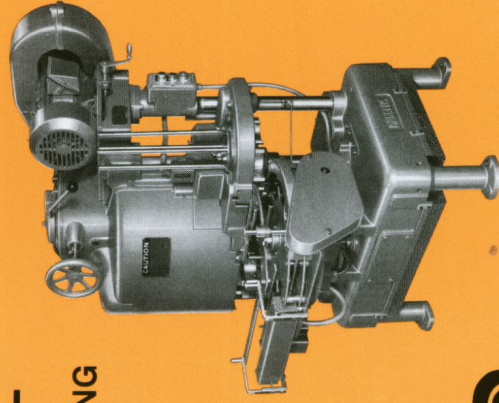


Easy can size change—A convenient hand crank adjusts the height of the upper turret, cover feed, and marker to accommodate varying can heights within the range of the machine. The can feed table remains at a fixed height. Change parts for commonly used can sizes will accommodate a height range variation of about 1 1/8" (28.6 mm). Greater variations in height require a substitution of height change parts.

Automatic stops—Model 60L seamers are equipped with automatic stops which actuate the clutch release unit and apply the brake to stop the machine rapidly. These safety devices are located on the can feed and upper discharge rail on both cannery and can making models, and on the filler drive attachment of the cannery model. If the cover supply runs too low, the power is cut off and the machine coasts to a stop before the cover supply is exhausted.

Model 60L CAN MANUFACTURING SEAMER

Designed for can manufacturing only. Supplied with a spiral worm can timing device for use with a filled can chute supplied by the customer. Cans are transferred onto a revolving disc and feed star from which they are carried into the seaming turret. The 60L can manufacturing seamer can also be modified for aerosol tops and bottoms with speeds up to 400 cans per minute.

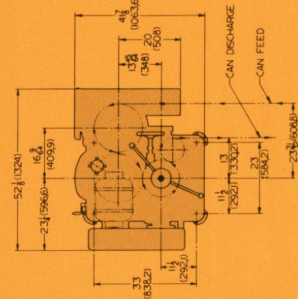


SIZE DIMENSIONS IN PARENTHESIS ARE MM.

SPECIFICATIONS

Min. can dia. 2" (50 mm)
 Max. can dia. ... 4 1/4" (108 mm)
 Min. can ht. ... 1 1/2" (38 mm)
 Max. can ht. ... 7 3/4" (197 mm)
 Horsepower req. ... 7 1/2 to 10

Net wt. of machine, approx. 4000 lbs. (1814 kg)
 Shpg. wt domestic, approx. 4250 lbs. (1927 kg)
 Shpg. wt export, approx. ... 5100 lbs. (2313 kg)
 Size of box for export. 71" x 71" x 86"
 (180 x 180 x 218 cm)
 Export box volume 251 cu. ft. (6.9 m³)



SIZE DIMENSIONS IN PARENTHESIS ARE MM.

SPECIFICATIONS

Min. can dia. 2" (50 mm)
 Max. can dia. ... 4 1/4" (108 mm)
 Min. can ht. ... 1 1/2" (38 mm)
 Max. can ht. ... 7 3/4" (197 mm)
 Horsepower req. 7 1/2 to 10

Net wt. of machine, approx. 4800 lbs. (2177 kg)
 Shpg. wt domestic, approx. 5200 lbs. (2358 kg)
 Shpg. wt export, approx. ... 5700 lbs. (2585 kg)
 Size of box for export. 71" x 71" x 86"
 (180 x 180 x 218 cm)
 Export box volume 251 cu. ft. (6.9 m³)

ANGELUS

Since 1910

SANITARY CAN MACHINE COMPANY